

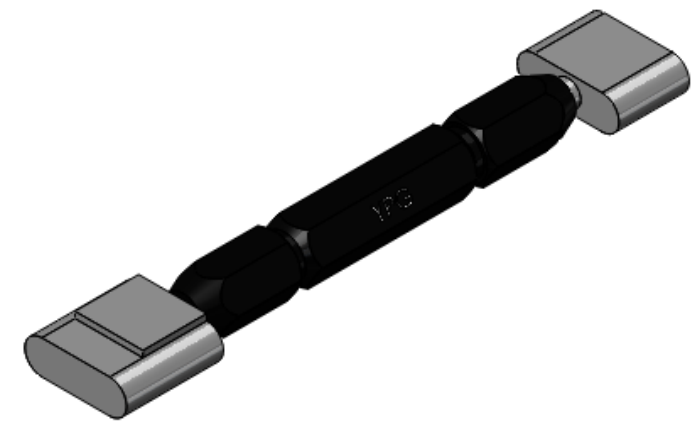
8 7 6 5 4 3 2 1

D



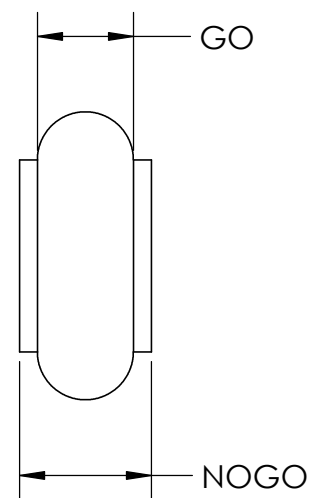
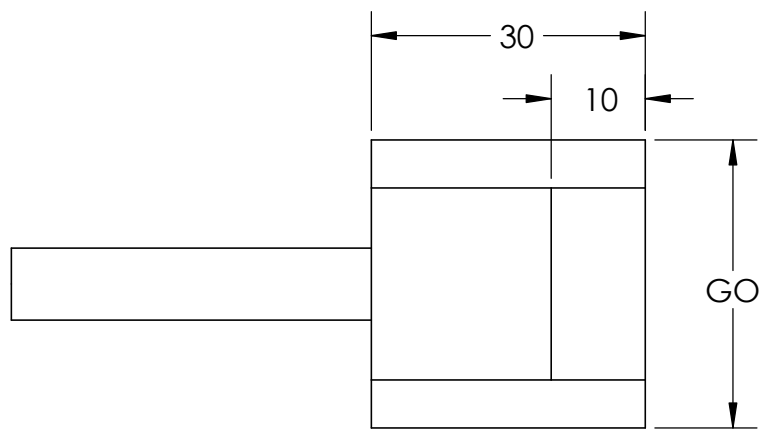
D

C



C

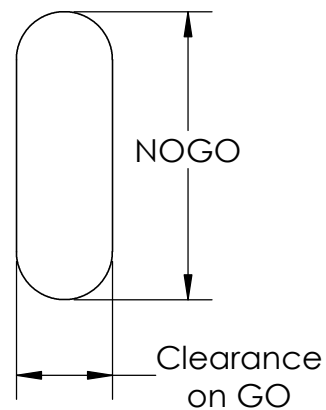
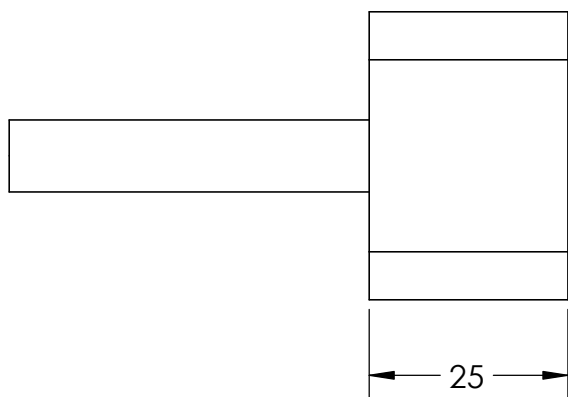
B



	GO	NOGO
Length		
Width		

B

A



	NAME	DATE	<p>Yorkshire Precision Gauges Hatfield Doncaster England DN7 6QF</p> <p>t: +44 (0)1302 840 303 f: +44 (0)1302 843 570 gauges@ypg.co.uk http://www.ypg.co.uk</p>
DRAWN	AG	7/7/15	
CHECKED	PA	7/9/15	
TITLE: Radius Ended Progressive Go/NoGo Slot Gauge			DWG. NO. G15-0708-00
CUSTOMER			
STANDARD			SCALE: NTS
GENERAL ARRANGEMENT			WEIGHT:
			SHEET 1 OF 1

A

8 7 6 5 4 3 2 1